

BUTTE. ELEVATED.

MONTANA





ATTRACTIONS

BERKELEY PIT

350 Shields Ave. | 406-723-3177 | pitwatch.org

From 1955 until 1982, the Berkeley Pit produced enough copper to pave a four-lane highway, four inches thick, from Butte to Salt Lake City, Utah and 30 miles beyond. When mining operations ceased in 1982, the underground pumps were shut off, and the Berkeley Pit began filling with acidic water, heavy metals and unique microscopic lifeforms. The Pit with its water and colorful landscape can be seen via a visitor viewing stand. Today, open pit mining continues behind the Berkeley Pit in the Continental Pit operated by Montana Resources employing 350 people year-round. The Viewing Stand and Gift Shop are open May – October, weather permitting.



BUTTE CHAMBER OF COMMERCE

1000 George St. | 406-723-3177
visitbutte.com & buttechamber.org

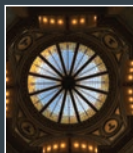
The Chamber is Butte's outlet to everything for the visitor. Come in to get all the best information for your visit and view: interpretive mining displays, native animal mounts, gift shop and the George F. Grant hand tied fishing flies, known for their highly detailed, hackle weaved style, a style rarely duplicated for its intricacy and complexity. The Chamber is open Monday-Friday year-round, Memorial Day through Labor Day, 7 days a week.



BUTTE-SILVER BOW COURTHOUSE

155 W. Granite | 406-497-6200 | bsb.mt.gov

Built in 1911, the rotunda walls are adorned with golden mosaic murals of personified muses; Justice, Geography, History, Philosophy and murals of Presidents Lincoln, McKinley, Washington, and Wilson. Large pillars of Montana-quarried Travertine draw the eye upward toward the mosaics and stained-glass dome. The impressive 1,500-pound, 28' in diameter, stained glass dome atop the rotunda was renovated in 2015. The Courthouse is open year-round.





BUTTE TROLLEY TOUR

1000 George St. | 406-723-3177 | buttechamber.org

Take an hour and a half tour of Butte's best history with Butte's best historians. Tours are scheduled Memorial Day weekend through September and year-round by appointment. Reservations are strongly suggested.



BUTTE-SILVER BOW PUBLIC ARCHIVES

17 W. Quartz St. | 406-782-3280 | buttearchives.org

Learn more about Butte's mining, labor, lifestyle and family histories. The Archives occupies a historic fire hall built in 1900 and features an inviting reading room, friendly staff, exhibits, collections, photographs, public programming, small firefighter's museum and rotating displays. A knowledgeable staff is available to assist with research on Butte's rich history. Services are available Monday-Friday from 9:00 a.m. – 5:00 p.m.



CLARK CHATEAU

321 W. Broadway St. | 406-565-5600
clarkchateaubutte.wordpress.com

The Clark Chateau was constructed in 1898-1899 for Charles and Katherine Clark, oldest son of Copper King W.A. Clark. Engaging tours of the Chateau, are led by knowledgeable and passionate staff and community volunteers. Tour guides lead groups through the building's seemingly infinite nooks and crannies, discussing the history of Butte as seen through the windows of one of the city's most cherished architectural icons. Learn about the mysterious Clark family, and many other fascinating former inhabitants while exploring this remarkable mansion. The Historic Clark Chateau: Where History Lives and Stories Grow.





ATTRACTIONS

COPPER KING MANSION

219 Granite St. | 406-782-7580 | thecopperkingmansion.com



The Mansion is a 34-room residence, built in Romanesque Revival Victorian architecture from 1884 to 1888 as residence for W.A. Clark. The home features fresco painted ceilings, elegant parquets of rare imported wood, gas and electric chandeliers, ornate hand-carved fireplaces,

stairways and stained-glass windows. The mansion was added to the National Register of Historic Places in 1970. The home is operated as a year-round bed and breakfast. Guided tours are available during the summer tourist season and by appointment during the winter months.

DUMAS BROTHEL

45 E. Mercury St. | 406-351-9922 | dumas-brothel.com



The longest running active brothel in U.S. history. It was open from 1890 until 1982. Over the years the brothel had several different owners and madams. In its early day's women used to hang out of windows in varying

states of dress, or undress in efforts to entice customers. As time progressed, this practice was stopped; heavy doors with sliding portals were installed with doormen monitoring visitors.

GRANITE MOUNTAIN MEMORIAL

Bernie's Way to Alexander St. | 406-723-3177 | minememorial.org



This memorial shares the events of June 8, 1917 when 168 miners lost their lives in the largest hard rock mining disaster of all time. The site also offers the visitor an unforgettable panoramic view of

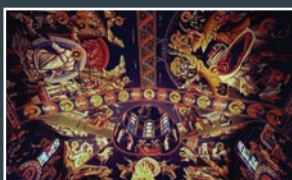
the 10,000-foot Highland Mountains, the Continental Divide and the remnants of a once booming mining industry. Open year-round.



HOLY TRINITY SERBIAN ORTHODOX CHURCH

2100 Continental Dr. | 406-723-7889 holytrinitybutte.org

Adorning the walls and ceilings are hand-painted frescoes depicting Scripture in color as they visually convey the word of God. Separating the altar from the nave is the hand-carved Iconostasis Screen, built in Belgrade, Serbia. Tours are available by appointment.



LINKED ADVENTURES

406-498-9653 | linkedadventures.com

The outdoor enthusiast's headquarters for shuttle service to the Continental Divide Trail and other stunning terrain. Bike rentals, route and full adventure planning are available for groups and individuals looking to explore the greater Butte and surrounding southwest Montana area.



NOT OPERATING 2020 TBD

MAI WAH MUSEUM

17 W. Mercury St. | 406-723-3231 | maiwah.org

Established for educational, charitable, and scientific purposes, including research and public education about the history, culture, and conditions of Asian people in the Rocky Mountain West. The Society, a 501(c)(3) not-for-profit organization, collects and preserves artifacts, preserves historic buildings and sites, presents public exhibits, and supports research and publication of materials of scholarly and general interest. Tours are available summer months, and by appointment in the off season.





ATTRACTIONS

MONTANA ATV ADVENTURES

406-491-4417 | montana-atv-adventures.com



Take an exciting guided ride through the trails of southwest Montana's mountains. View: old mining ghost towns and camps, massive granite and brick mills, panoramic views and wildlife.

MOTHER LODGE THEATRE

316 W. Park St. | 406-723-3602 | buttearts.org

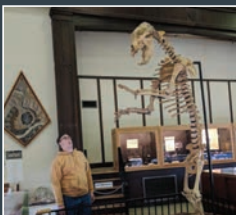


Built in 1923 by the Masons for the organization's ceremonial services, the building was later transformed into a movie house and eventually leased to 20th Century Fox. In the 1990's the Mason's donated the theatre to the local government

where a group of citizens formed the non-profit corporation, The Butte Center for the Performing Arts, who took over the renovation of the facility. Today the Mother Lode Theatre is the elegant venue for The Butte Symphony, Community Concert Series, Mother Lode Series and a variety of community events, and a plethora of culturally rich shows.

MONTANA TECH MINERAL MUSEUM

1300 W. Park St. | 406-496-4414 | mbmg.mtech.edu



View educational displays and spectacular minerals from Montana and around the world. Prize specimens in the Montana collection include the Rheanna's Star, an incredible smoky quartz cluster and the 27.5 oz. Highland Centennial gold nugget, both found in the Butte area.

Additional exhibits include a fluorescent mineral display and an earthquake hazards display including a live seismograph. The museum and gift shop are open for Summer Hours: 9 to 5, seven days a week- June 15 to September 15. Winter Hours: 9 to 4 weekdays. Closed on holidays.



NATIONAL HISTORIC DISTRICT

406-723-3177 | visitbutte.com

One of the largest historic landmark districts in the country, Butte offers a legacy of architectural treasures that are contemporaries of the best Victorian architecture in America's great cities. The Uptown is filled with well-preserved examples of early 20th century architecture. Take a walk and read the history of Butte's buildings on the National Historic Landmark plaques. A map of the district is available at the Butte Archives and the Butte Chamber of Commerce.



OLD BUTTE HISTORICAL ADVENTURES

117 N. Main St. | 406-498-3424 | buttetours.info

A series of guided walking tours highlight details of Butte's colorful history from the 1890's through the 1950's. Three different tours are offered year-round by reservation. Come see Butte from the inside-out.



OLD LEXINGTON STAMP MILL AND GARDEN

300-304 E. Granite St. | visitbutte.com

At the corner of Arizona and Granite Streets in Uptown Butte, this landmark abounds with an array of colorful flowers during the summer, while celebrating one of the city's oldest industrial sites. In 1867, Charles Hendrie started construction of the stamp mill for crushing ore to capture gold and silver. The mill worked the production of the famous Lexington Silver Mine further up the hill in Walkerville before being sold and moved to Pony, Montana, where the last stamp dropped on ore took place in the mid-1950's. Local history enthusiasts brought the mill back to Butte making it the focus of a community garden in the late 1990's. Open year-round.





ATTRACTIONS

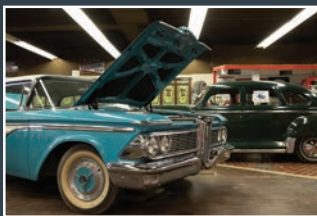
OUR LADY OF THE ROCKIES

3100 Harrison Ave. | 406-782-1221 | ourladyoftherockies.net



The ninety-foot statue, Our Lady of the Rockies, sits serenely atop the East Ridge keeping vigil on the community of Butte. A half-day tour on a winding mountain road presents the visitor with a spectacular view and an inspiring story. The Lady was built and is maintained by volunteers and donations. The story of Our Lady is one of love, dedication, and faith. Tours run daily mid-June thru October, weather permitting. The gift shop in the Butte Plaza Mall is open year-round with the opportunity to watch the movie on the story of Our Lady.

PICCADILLY MUSEUM OF TRANSPORTATION AND ADVERTISING ART



20 W. Broadway St. | 406-723-3034
piccmuseum.com

View hundreds of unique transportation-related advertising items from the 20th Century from around the USA and countries abroad. Included in the display are signs, posters, gas pumps, old cars, railroading and Henry's Garage. Open summer season Monday-Saturday 10 a.m. – 4 p.m. Off-season by appointment.

SCIENCE MINE

36 E. Granite St. | 406-497-7777 | sciencemine.org



Science enthusiasts of all ages can come and explore the interactive exhibits on display. Explore a hands-on science and discovery learning center where interactive displays and science concepts are showcased. Open on Saturdays year-round and by appointment.



SILVER BOW DRIVE-IN MOVIE THEATER

Exit 119 off I-15 - Six miles South of Butte

406-782-8095 | silverbowdrivein.com

Offering an affordable night out under the stars is the old-fashioned experience of watching a movie from the comfort of your vehicle. The concession stand is open with delectable fresh popcorn, candy and beverages. The Silver Bow Drive In opens in the spring of each year, closing in September.



SPIRIT OF THE COLUMBIA GARDENS CAROUSEL

3203 Utah St. | 406-494-7775

buttecarousel.com

A Carousel of 35 Horses (open 250 days a year), and containing a conference room, Coaster Café, large gift shop, museum carving room, paint room and restrooms.



WORLD MUSEUM OF MINING

155 Museum Way | 406-723-7211 miningmuseum.org

Explore more than 50 structures, ranging from the 100-foot headframe of the Orphan Girl Mine to the re-creation of a mining camp Hell Roarin' Gulch. Half of the museum's displays focus on the culture and ethnic history of an 1880's to 1920's mining town, while the other half provides a detailed look at the history of mining technology. Built on an actual historic mine site, the museum offers a unique underground mining tour. Open April- September, weather permitting.





STODDEN PARK

STODDEN PARK - SPORTS RECREATION - PLAYGROUND - WATERPARK - VETERAN'S MEMORIAL

3203 Utah | 406-497-6571 | bsb.mt.gov

Butte's largest park complex is in the heart of Butte. This park has been upgraded over the past several years offering recreational opportunities for every age.

DESTINATION PLAYGROUND

This all-inclusive mining themed playground features; a full size 14' mine dump truck with slides, a 30' rope climber, a 12' "Big M" replica climbing wall, 20' headframes, swings, zip line, and more. For smaller children, the park has a designated area surrounded with workout stations. The best part of this playground is the inclusive design, offering access to all aspects of the park for children with limited mobility.

RIDGE WATERS COMMUNITY POOL

A new waterpark featuring; Montana's longest lazy river, two slides, water basketball goal, water volleyball, six-way tippy tree, gusher jet, aqua arch, climbing wall, concessions and more.

HIGHLAND VIEW GOLF COURSE

This course offers both a 9-Hole regulation course and a 9-Hole Par 3 course. The 9-Hole course is a par 35 course, with two challenging par-3 holes, and practice putting green. A new clubhouse is slated for the Summer of 2020. The Par-3 course is easy to walk, offering fun for the whole family.

OTHER PARK AMENITIES

Walking trail, three rentable pavilions, tennis courts, softball fields, horseshoe pits, picnic pavilions, amphitheater and ice-skating ribbon.

VETERAN'S MEMORIAL

The official Montana state Korean Veterans' Memorial honoring the dedicated men and women of the United States who served in the Republic of Korea.



ANNUAL EVENTS

**Please check websites for actual dates.*

SNOFLINGA

January | www.snoflinga.org

CHINESE NEW YEAR

January and/or February | maiwah.org

ST. URHO'S & ST. PATRICK'S DAY

March 16 & 17 | www.butteamericafoundation.org

FREEDOM FESTIVAL

July 3 & 4 | www.butteamericafoundation.org

MONTANA FOLK FESTIVAL

Mid-July | www.montanafolkfestival.com

BUTTE 100 MOUNTAIN BIKE RACE

July | www.butte100.com

AN RI RA

Mid-August | www.mtgaelic.org

COVELLITE INTERNATIONAL FILM FESTIVAL

Mid-September | www.covellitefilmfest.org

SPOOKS & SPIRITS HAUNTED TROLLEY TOURS

Various dates throughout October | www.visitbutte.com

CHRISTMAS STROLL & PARADE

Beginning of December | www.mainstreetbutte.org

ICE CARVING

Mid-December | www.mainstreetbutte.org

RECURRING EVENTS

UPTOWN ART WALKS

1st Thursday of the month, May through October

FARMER'S MARKET

Every Saturday, end of May through October | Park Street in Historic Uptown Butte

EVENTSINBUTTE.COM

A COMMUNITY CALENDAR



RECREATION

Nestled a mile high in the Rocky Mountains, surrounded by the natural wonders of the Continental Divide and Montana's headwater streams, Butte serves as a springboard to almost four million acres of state and federal public land. High quality adventures are just minutes from the city, whether you have a few hours or several days. Bring your favorite gear and head outdoors, and then relax amid Butte's unique and vibrant history.

FISHING/HUNTING

Butte is surrounded by several blue-ribbon trout rivers and streams. Within an hour's drive, visitors can be casting on the banks of the Big Hole, Beaverhead, Jefferson, Clark Fork, Little Blackfoot rivers and Georgetown Lake from several public fishing access sites. Or venture further afield to the Missouri, Madison and Blackfoot rivers. Visitors can hike to alpine lakes in the Tobacco Root, Pioneer, and Flint mountain ranges. Kids can cast a line at Skyline Park or at Homestake Lake just 10 minutes east of Butte on Interstate-90. Hunters take to valleys and mountains for big game, waterfowl, and upland bird opportunities.

TRAILS

Whether you want to experience Montana's spectacular natural vistas on foot, on a saddle, or pedaling a mountain bike, spectacular and uncrowded trails are minutes from Butte. The nationally recognized Continental Divide National Scenic Trail (CDNST) surrounding Butte is accessible from multiple trailheads. Thompson Park, just 9 miles south of Butte, offers more than 25 miles of non-motorized trails, including the Milwaukee Road Rail-Trail that connects to the CDNST. The CDNST has 13 trailheads within an hour of Butte for a one or multi-day hike or ride.



The Anaconda-Pintler Wilderness to the west of Butte is accessible from the Big Hole River Valley or the Georgetown Lake-Philipsburg area, providing primitive hiking and horseback riding. The Humbug Spires area south of Butte offers a unique geologic setting for hiking or rock climbing. The Beaverhead-Deerlodge



National Forest and the Bureau of Land Management offer over 400 miles of motorized trails 30 minutes from Butte to the east at the Whitetail-Pipestone area and to the south at Fleecer Mountain. Over 25 miles of great trails can also be found within the Butte city limits. The Copperway and BA&P trails, named for the Butte, Anaconda and Pacific electric railroad, allow trail users to learn about Butte's colorful history. Hike the 'M' at Big Butte, a 300-acre open space area with several loop trail opportunities. Try the Whiskey Gulch Mountain Bike Skills Park or the disc golf course at Montana Tech, next to Big Butte. Enjoy bird-watching at Blacktail Creek along the Schotte-Ulrich and Poore-Wilde trails. Ride a bike along one of the largest creek-restoration projects in the world, the 26-mile Greenway Trail from Butte to Anaconda. Portions of the Greenway are still under construction, but many miles west of Butte are completed and readily accessible from several trailheads. Most urban trails are paved for yearlong access. Finally, Maud S Canyon Trail puts nature within easy reach of urban Butte, providing a loop trail great for a sunset hike or bike ride up Butte's majestic East Ridge. Adventurers looking for a longer hike or ride can follow the Maud S Trail all the way to the CDNST. Trail maps are available at the Butte Chamber Visitor Center, BLM or Forest Service.

PARKS AND RECREATION

The Butte-Silver Bow Parks and Recreation Department offers a variety of activities for visitors. Cool down at the splash pad at Clark's Park or play and slide at Ridge Waters Community Pool and waterpark at Stodden Park. Practice your swing or enjoy a round of disc golf at Copper Mountain Sports Complex driving range, play Stodden Park's Highland View Golf Course, or stay active on Butte's many tennis courts, baseball fields, and ice rinks. Along with recreation, the county provides a window into Butte's colorful history and geology. Take a hillside stroll past the mine workings of the Mtn Con Mine and enjoy unmatched views of Butte's Summit Valley. Stop by the Original Mine, the main stage for many of Butte's summer festivals for an example of how the community is re-imagining its historic assets. Head up to Walkerville's Alice Overlook to experience mining reclamation while taking in views of five distinct mountain ranges.



RECREATION

CAMPING/PICNICKING

Public lands around Butte feature many, well-maintained camping and picnicking areas amid spectacular mountain lakes, river valleys, and forest landscapes. Just south of Butte, Thompson Park has several day-use picnic areas that features interpretive signs that explain the history and natural features of the park. Sheepshead Recreation Area north of Butte has two pavilions that can be reserved for events. The Forest Service has rustic cabins and campgrounds in the forest or along lakes and rivers that can be reserved at www.recreation.gov or 1-877-444-6777. The Bureau of Land Management and Montana State Parks provides camping and river access along the Big Hole River.

MOUNTAIN BIKING

Great mountain biking trails can be found around Butte with summer and fall being ideal times to ride. Diverse terrain and scenery make these trails perfect for all mountain bikers. Thompson Park offers 14 miles of groomed trails for winter fun that is great for hiking. Single Tracks Magazine named Butte as the number 2 of the "10 Best US Mountain Bike Towns with the Lowest Cost of Living", March 2018.

GEOLOGICAL FEATURES

The unique geology of southwest Montana is the source of Butte's mining wealth, and also created some amazing natural features that provide interest and excitement for all ages. The Ringing Rocks east of Butte chime when tapped lightly with a hammer. Tapping different rocks creates different pitches to make your own natural symphony. Crystal Park south of Wise River in the scenic Pioneer Range is a favorite for families. The Humbug Spires south of Butte and the Pipestone area east of Butte are popular rock-climbing areas. Or go underground on a tour of Lewis and Clark Caverns, just east of Butte.



WINTER ACTIVITIES

Whether you want to cross-country or downhill ski, snowmobile, snowshoe, ice fish or capture photos of majestic scenery, winter brings great opportunities to enjoy the outdoors. Enjoy downhill skiing at Discovery Ski Basin near Georgetown Lake or Maverick Mountain near Dillon. Groomed cross-country ski trails and snowmobile trails are an easy drive from Butte at Mount Haggin, Elk Park, Georgetown Lake and the Big Hole Valley. Thompson Park offers winter fun for backcountry skiing, snowshoeing and fat biking on groomed and ungroomed trails. Butte-Silver Bow Parks and Recreation and the High-Altitude Skating Center maintain outdoor ice rinks for family fun. Bundle-up and come out and play! More information on outdoor activities can be found at:



More information on outdoor activities can be found at:

Butte-Silver Bow CVB

406-723-3177
visitbutte.com

Butte-Silver Bow Parks Department

406-497-6565
www.co.silverbow.mt.us/192/Parks-Recreation

Bureau of Land Management - Butte Field Office

406-533-7600
blm.gov/montana-dakotas

U.S. Forest Service - Butte Ranger District

406-494-2147
fs.usda.gov/bdnf/

Fish, Wildlife & Parks - Butte Area Resource Office

406-494-1953
fwp.mt.gov



LODGING

AMERICAS BEST VALUE INN

122001 W. Browns Gulch Rd. | 406-723-5464
americasbestvalueinn.com

48 rooms, Wi-Fi, accessible, limited pets, outdoor plug-ins, satellite TV, guest laundry, business center, lounge.

BEST WESTERN PLUS BUTTE PLAZA INN

2900 Harrison Ave. | 406-494-3500 | bestwestern.com

133 rooms, free hot breakfast, indoor pool, accessible, pet-friendly, guest laundry, conference rooms, fitness center, free shuttle service, high-speed internet, Hops Pub and Casino, Perkins Family Restaurant.

COMFORT INN OF BUTTE

2777 Harrison Ave. | 406-494-8850 | comfortinnbutte.com

140 rooms, completely renovated, free hot breakfast buffet, indoor pool, two hot tubs, sauna, fitness center, fiber-fast free Wi-Fi, pet-friendly rooms available, free local shuttle service, guest laundry.

COPPER KING HOTEL AND CONVENTION CENTER *ASCEND COLLECTION

4655 Harrison Ave. | 406-565-5001 | copperkinghotel.com

130 rooms, over 15K square feet of meeting and convention space, Executive suites, large family suites, large indoor pool, hot tub, fitness center, business center guest laundry, pet-friendly, free shuttle service and Courtyard with fire pit. Montana's Rib & Chop Steak House and Flawless Medical Spa on sight.

DAYS INN BUTTE

2700 Harrison Ave. | 406-494-7000 | daysinn.com

74 rooms, pet-friendly, continental breakfast, Wi-Fi, exercise room, king business zone rooms, jacuzzi suites, indoor pool, coffee makers.

EDDY'S MOTEL

1205 S. Montana St. | 406-723-4364 | eddysmotelbuttemontana.com

26 rooms - including one double king with kitchenette, high-speed internet, cable tv, dog friendly, close to Visitor's Center and walking trail.



FAIRFIELD INN & SUITES BY MARRIOTT BUTTE

2340 Cornell Ave. | 406-494-3000 | marriot.com

84 rooms, free hot breakfast, Wi-Fi, whirlpool, indoor pool, fitness center.

FAIRMONT CHALETS

105 German Gulch Rd., I-90 Exit 211 | 406-797-8169 or 888-797-8169 | fairmontchalets.com

5 cabins, living room, fully equipped kitchen, full bath, 1 bedroom on main floor with 2 full size beds in loft.

FAIRMONT ESTATES CONDOMINIUMS

101 High Country Dr. | 406-797-3228 | fairmontestates.com

Fully furnished 1 and 2-bedroom condos, includes swimming at Fairmont Hot Springs, free Wi-Fi, contact directly for availability and reservation.

FAIRMONT HOT SPRINGS RESORT

1500 Fairmont Rd. | 406-797-3241 | fairmontmontana.com

153 guest rooms and suites, four naturally heated hot springs pools both indoor and outdoor, 350' enclosed waterslide, 18-hole golf course, Springwater Café, Waters Edge Dining Room, Whiskey Joe's Lounge, outdoor pool bar, over 20,000 square feet of meeting and catering space, business center, complimentary WIFI, Whispering Willows Spa, gift shop, playground and wildlife zoo.

FINLEN HOTEL AND MOTOR INN

100 E. Broadway St. | 406-723-5461 | finlen.com

24 rooms in the historic boutique hotel building and 32 motor inn rooms, all rooms have irons, ironing boards, flat screen TV's, free and unlimited local calls, free high-speed wireless internet.

HAMPTON INN BY HILTON

3499 Harrison Ave. | 406-494-2250 | hamptoninn3.hilton.com

91 rooms, free hot breakfast, indoor pool and spa, guest laundry, fitness center, complimentary 24-hour shuttle service, high-speed internet, business center, fitness center, indoor pool.



LODGING

HOLIDAY INN EXPRESS & SUITES

2609 Harrison Ave. | 406-782-2000 | ihg.com

84 rooms, free hot breakfast, high-speed internet, business center, guest laundry, fitness center, indoor pool, conference room, long term stay suites.

LA QUINTA INN & SUITES BUTTE

1 Holiday Park Dr. | 406-494-6999 | lq.com

83 rooms and suites all with mini-fridges and microwaves, sundry shop, guest laundry, hot tub, fitness center, free hot breakfast, accessible, pet-friendly, business center, conference rooms, high-speed internet.

MINER'S BOUTIQUE HOTEL

53 Park St. | 406-723-8928 | theminershôtel.com

12 room boutique hotel in Historic Uptown Butte has a combination of suites and guest rooms. Located inside the hotel is Fifty One Below Speakeasy & Casino. Walking distance to Uptown businesses. Free guest parking, gift shop, accessible.

MOTEL 6-UPTOWN

220 N. Wyoming St. | 406-723-4391 | motel6.com

66 rooms, high-speed internet, meeting room, accessible, pet-friendly, guest laundry, gift shop.

QUALITY INN & SUITES

2100 Cornell Ave. | 406-494-7800 | choicehotels.com

131 rooms, full hot breakfast, pool, hot tub, sauna, business center, lounge, conference rooms, outdoor reception area with a water feature and stream.

RED LION INN AND SUITES BUTTE

12205 Nissler Rd. | 406-782-5678 | redlion.com

65 rooms, free Hot Breakfast, Wi-Fi, pet-friendly, free local calls, quiet mountain views.

SUPER 8

2929 Harrison Ave. | 406-494-6000 | super8.com

106 rooms, free breakfast, accessible, pet-friendly, guest laundry, business center, high-speed internet.



UNIQUE LODGING

COPPER KING MANSION

219 W. Granite St. | 406-782-7580 | copperkingmansion.com

Victorian elegance is showcased in this Bed & Breakfast located in the heart of Butte's Historical District, featuring; a one room suite, a two-room suite, and a three-room suite each with its own bathroom. Tours available for guests. For more information on the Mansion, refer to the Attractions section of this guide.

HODGENS RYAN MANSION

105 N. Excelsior | 406-916-7922 | hodgensryanmansion.com

Located in the Historical District with 9 rooms available for rent, 4 large rooms with private bathrooms. Fully equipped kitchen, dining room, living room, sitting areas, coin-operated washer, dryer, and exercise equipment.

TOAD HALL MANOR

1 Green Ln. | 800-494-2625 | toadhallmanor.com

Elegant, European-like hotel with the "Tender Loving Care" of a Bed & Breakfast. Four room/suites, all with private baths. This beautiful home is located on the Butte Country Club, offering quiet surroundings.

CAMPGROUNDS

2 BAR LAZY H RV PARK

122015 W. Browns Gulch Rd. | 406-782-5464

BUTTE KOA JOURNEY

1601 Kaw Ave. | 406-782-8080 | koa.com/campgrounds/butte

FAIRMONT RV PARK & CAMPGROUND

1700 Fairmont Rd. | 406-797-3505 | fairmontrvresort.com

DINING

FINE DINING

CASAGRANDA'S STEAKHOUSE, 801 S. Utah Ave., 406.723.4141

DERBY STEAKHOUSE, 2016 Harrison Ave., 406.723.9086

LA CASA TOSCANA, 53 E. Park St., 406.299.2890

LYDIA'S SUPPER CLUB, 4915 Harrison Ave., 406.494.2000

MONTANA'S RIB & CHOP HOUSE,
4655 Harrison Ave., 406.494.9200

PARK 217, 217 W. Park St., 406.299.3570

UPTOWN CAFÉ, 47 E. Broadway St. 406.723.4735

WATERS EDGE DINING ROOM, 1500 Fairmont Rd., 406.797.3272

CASUAL DINING

ANNIE'S CAFÉ, 815 E. Front St., 406.565.3165

ASIA BUFFET, 1921 Dewey Blvd., 406.565.5417

BONANZA FREEZE, 1040 S. Montana St., 406.723.6662

BUFFALO WILD WINGS, 3745 Harrison Ave., 406.494.9464

BUTTE BREWING COMPANY, 465 E. Galena St., 406.299.3953

BUTTE COUNTRY CLUB 19th HOLE,
3400 Elizabeth Warren, 406.494.2394

CHRISTINA'S COCINA, 2201 Silver Bow Blvd., 406.723.8444

COPPER CITY CASINO, 1285 Harrison Ave., 406.782.8828

EL TACO, 2300 Harrison Ave., 406.723.9329

FAMILY ROOTS, 22 W. Galena St., 406.299.2888

FREEWAY TAVERN, 2001 S. Montana St., 406.723.9083

FRONT STREET MARKET, 8 W. Front St., 406.782.2614

GAMER'S CAFÉ, 15 W. Park St., 406.723.5453

GREAT HARVEST BREAD CO., 1803 Harrison Ave., 406.723.4988

HANGING FIVE RESTAURANT, 2110 Harvard, 406.494.4309

HUMMINGBIRD CAFÉ, 605 W. Park St., 406.723.2044

IT'S GREEK TO ME, 3100 Harrison Ave., 406.782.3122

JOE'S PASTY SHOP, 1641 Grand Ave., 406.723.9071

JOKER'S WILD STEAKHOUSE, 1201 S. Montana St., 406.782.6587

M&M BAR AND CAFÉ, 9 N. Main St., 406.299.3998

MAC'S TAVERN, 125 N Main St., 406.299.2989

MACKENZIE RIVER PIZZA, 3450 Monroe Ave., 406.782.0020

MATT'S PLACE, 2339 Placer St., 406.782.8049

METAL'S SPORTS BAR & GRILL, 8 W. Park St., 406.782.5534

MONTANA CLUB, 3540 Harrison Ave., 406.494.1400

MR. HOT DOGS, 1806 Cobban St., 406.490.3220

NANCY'S PASTY SHOP, 2810 Pine St., 406.782.7410

NORTH 46, 102 E. Granite St., 406.498.5379

OASIS CASINO/RESTAURANT, 2320 Amherst St., 406.494.1272

OMG! MONGOLIAN GRILL, 17 N. Main St., 406.565.5660

ORE CART, 101 Airport Rd., 406.533.9319

PARK & MAIN CAFÉ, 8 W. Park St., 406.299.2069

PAUL BUNYAN'S SANDWICH SHOP, 3150 Busch St., 406.494.7817

PEKIN NOODLE PARLOR, 113 S. Main St., 406.782.2217

PERKINS RESTAURANT, 2900 Harrison Ave., 406.494.2490

PIZZA RANCH, 3541 Harrison Ave., 406.494.2822

PORK CHOP JOHNS, 8 W. Mercury St., 406.782.0812

PORK CHOP JOHNS, 2400 Harrison Ave., 406.782.1783

ROYSE'S HAMBURGERS & MORE,

2340 Harrison Ave., 406.782.1971

SILVER BOW PIZZA, 3500 Harrison Ave., 406.494.2750

SOHO ASIAN CUISINE, 60 E. Broadway St., 406.221.7288

SPARKY'S GARAGE, 222 E. Park St., 406.782.2301

SPRINGWATER CAFÉ, 1500 Fairmont Rd., 406.797.3272

STAR LANES CAFÉ, 4600 Harrison Ave., 406.494.3898

THREE AMIGOS, 2930 Harrison Ave., 406.494.6677

TRUZZOLINO TAMALES, 1921 Harrison Ave., 406.782.0374

VU VILLA BAR/PIZZA, 521 W. Park St., 406.723.9885

WETONA'S COFFE HOUSE/DELI, 2121 Amherst St., 406.494.7924

ZOBANEY'S, 2400 Harvard Ave., 406.565.5627

DINING

FAST CASUAL

- ARBY'S**, 3131 Harrison Ave., 406.494.1438
- BURGER KING**, 1955 Dewey Blvd., 406.494.1955
- DAIRY QUEEN**, 2227 Harrison Ave., 406.299.3324
- DAIRY QUEEN**, 501 S. Excelsior Ave., 406.782-5781
- DICKEY'S BARBECUE PIT**, 2800 Harrison Ave., 406.299.2271
- DOMINO'S PIZZA**, 2101 Harrison Ave., 406.782.3000
- JIMMY JOHNS**, 563 S. Arizona St., 406.299.3933
- KFC/A&W**, 3099 Harrison Ave., 406.494.3535
- LITTLE CAESAR'S PIZZA**, 1325 Harrison Ave., 406.221.7040
- McDONALD'S**, 3001 Harrison Ave., 406.494.4168
- McDONALD'S**, 1000 Grizzly Trail, 406.782.2565
- PAPA JOHN'S PIZZA**, 2710 Harrison Ave., 406.533.1111
- PAPA MURPHY'S**, 2119 Amherst St., 406.723.5050
- PITA PIT**, 1 N Montana St., 406.299.3658
- PIZZA HUT**, 3040 Busch St., 406.723.2323
- QUIZNO'S**, 2119 Amherst St., 406.494.4745
- STAGGERING OX**, 549 S. Main St., 406.299.3948
- SUBWAY**, 3301 Harrison Ave., 406.494.8023
- SUBWAY**, 350 S. Montana St., 406.723.7035
- SUBWAY**, 1000 Grizzly Trail, 406.782.0101
- TACO BELL**, 2939 Harrison Ave., 406.494.5252
- TACO DEL SOL**, 146 W. Park St., 406.782.8226
- TACO JOHN'S**, 1960 Harrison Ave., 406.723.8222
- WENDY'S**, 3221 Harrison Ave., 406.494.6031

COFFEE SHOPS & BAKERIES

- CITY BREW**, 2902 Harrison Ave., 406.494.7707
- FLORENCE COFFEE**, 2000 Harvard Ave., 406.593.0876
- FLORENCE COFFEE**, 815 S. Montana St., 406.593-0876
- JAVA JUNCTION**, 1200 S Montana St., 406.490.8603
- MICK & GOLIDE'S BAKERY**, 116 W. Park St., 406.565.5281
- MINING CITY MUD**, 600 S.Excelsior Ave., 406.434.6502
- ORO FINO COFFEE**, 68 W. Park St., 406.491.2093
- STARBUCKS**, 3201 Harrison Ave., 406.494.4952
- TOWN TALK BAKERY**, 611 E. Front St., 406.782.4985
- VENUS RISING**, 113 N Hamilton, 406.201.6929

Produced with Accommodations Tax Funds.
Printed in the USA for free distribution.
Alternative accessible formats of this document
will be provided upon request.
Printed on recycled paper.

Butte Convention and Visitors Bureau
1000 George St. / Butte, MT 59701
1-800-735-6814

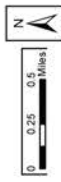
For more information, please visit us at:
www.visitbutte.com

BUTTE URBAN TRAILHEADS

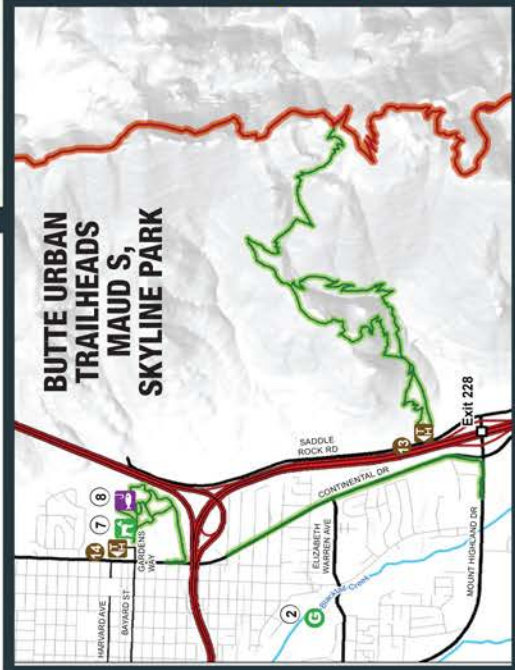


Legend

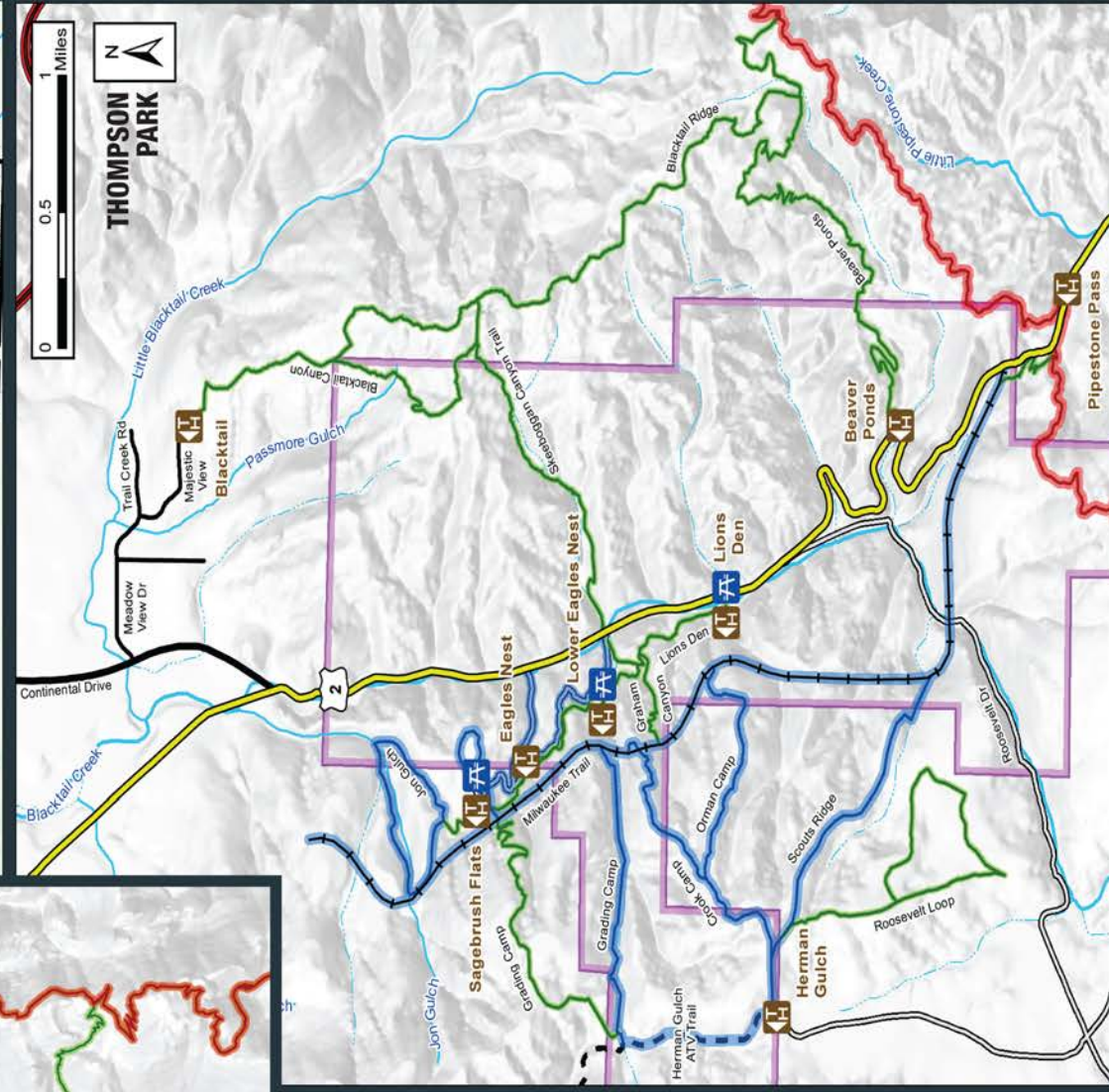
- Skyline Kids Fishing Pond
- Chamber/Visitor Info Center
- Water Park
- McGruff Skateboard Park
- Skyline Dog Park
- Golf Course
- MT Tech Bike Skills Park
- Trails
- Thompson Park Trail/Road
- Groomed for Winter Snow-bike
- Point of Interest ID
- Trailhead ID



BUTTE URBAN TRAILHEADS, MAUD S, SKYLINE PARK



THOMPSON PARK



RECREATION AREAS

BUTTE-SILVER BOW URBAN TRAILHEADS

- Alice Knob
- Granite Mine Memorial
- MT Con
- BA&P East
- Big Butte
- BA&P West
- Whiskey Gulch
- Chamber-Visitor Information Center
- Civic Center
- Blacktail
- Skyline Park
- Copper Mountain Park
- Maud S Canyon [Butte Rotary/ERF]

OTHER RECREATION FACILITIES

- 1 Stodden Park (Tennis, Golf, Pool (2018))
- 2 Highland View Golf Course
- 3 MT Tech Bike Skills Park
- 4 Chester Steele Wading Pool
- 5 Clark Park Splash Pad
- 6 McGruff Skateboard Park
- 7 Skyline Dog Park
- 8 Skyline Kids Fishing Pond